



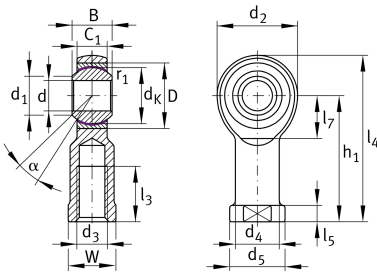
GIKL6-PW-A

Rod end

Schaeffler ID:
0066349310000

Rod end with internal thread, left hand thread, maintenance-free, sliding layer: PTFE film, brass outer ring, DIN ISO 12240-4, dimension series K, type F, open design

Technical information



Main Dimensions & Performance Data

d	6 mm	Bore diameter bearing
D	16 mm	Outside diameter bearing
B	9 mm	Width inner ring
C_r	7,650 N	Basic dynamic load rating, radial
C_{0r}	8,000 N	Basic static load rating, radial
	0.03 kg	Weight

Dimensions

d_K	12.7 mm	Ball diameter
d_1	8.9 mm	Outer flange diameter inner ring
d_2	20 mm	Outer eye diameter
d_3	M6	Thread size
d_4	10 mm	Shank diameter
h_1	30 mm	Shank Length Internal thread head
C_1	6.75 mm	Width of the rod end
α	13 °	Tilt angle
l_3	12 mm	Thread length Internal thread
l_4	40 mm	Total length internal thread head
l_5	5 mm	length rod end shank
l_7	11 mm	Distance drilling with/shaft start
d_5	13 mm	Shank diameter, large
W	11 mm	Width Across Flat
G_r	0 - 0,035 mm	Radial Clearance
d_{OT}	0.012 mm	Bore diameter bearing, upper tolerance
d_{UT}	0 mm	Bore diameter bearing, lower tolerance
d_T	H7 mm	Bore diameter bearing, tolerance
B_{OT}	0 mm	Width inner ring, upper tolerance
B_{UT}	-0.12 mm	Width inner ring, lower tolerance

Mounting dimensions

r_{1smin}	0.3 mm	Edge Spacing
-------------	--------	--------------

Temperature range

T_{min}	-50 °C	Operating temperature min.
T_{max}	200 °C	Operating temperature max.